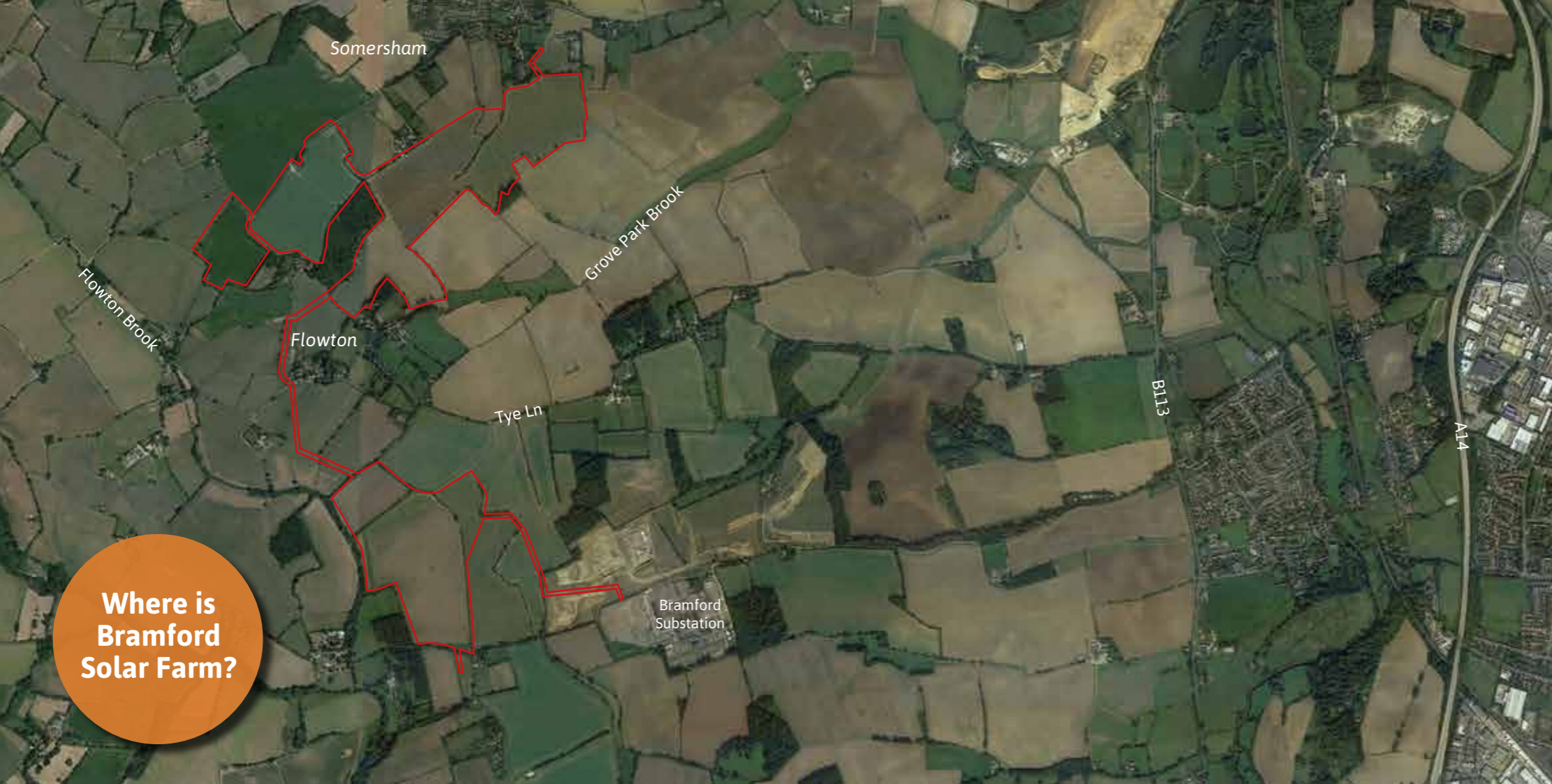




enso
energy

Bramford Solar Farm





**Where is
Bramford
Solar Farm?**

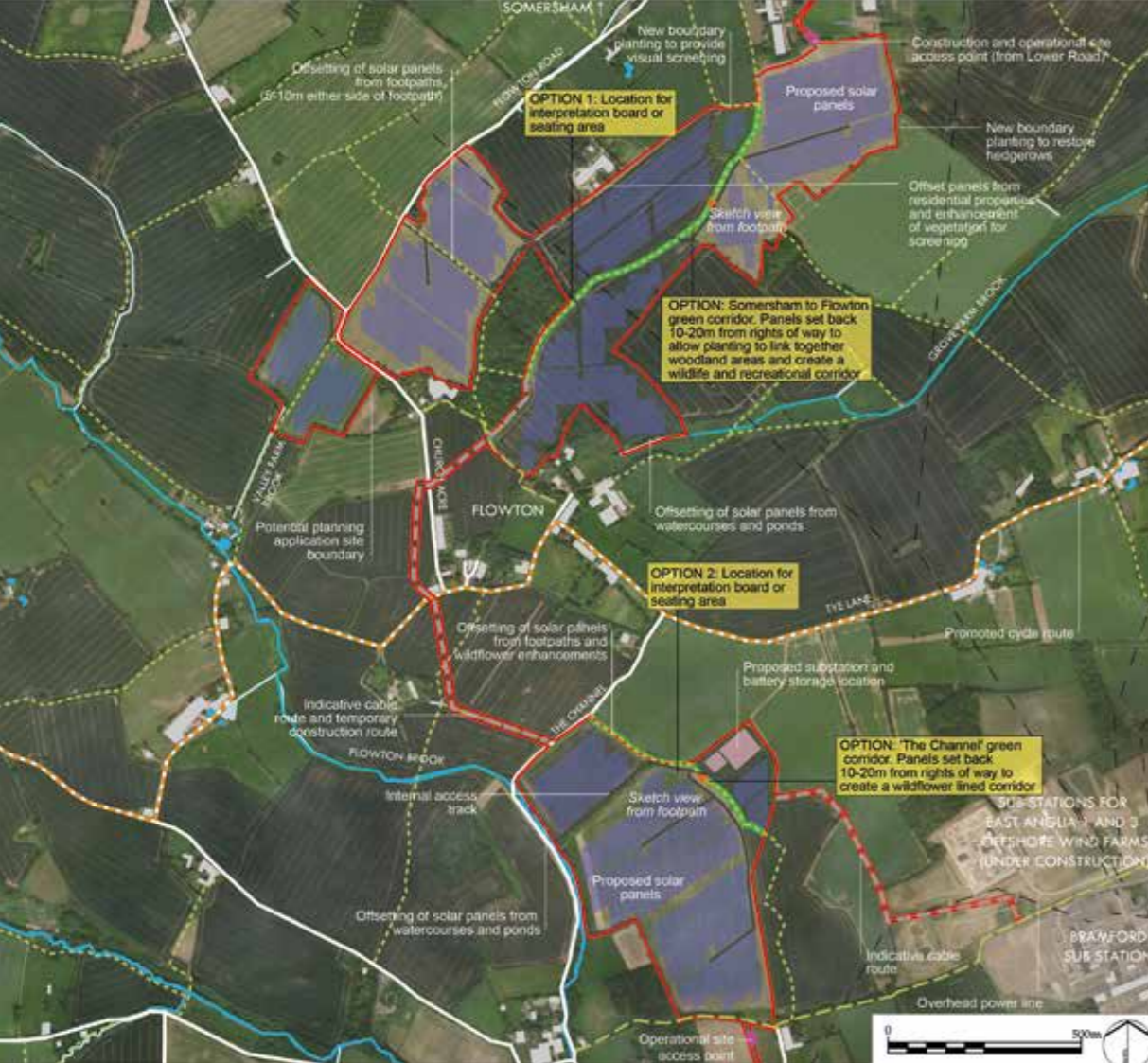
Introducing Bramford Solar Farm

Enso Energy, through its subsidiary company Bramford Green Limited, is proposing to develop a solar farm and battery storage facility on land south of Church Farm, Somersham, Ipswich, IP8 4PN and land east of the Channel, IP8 4JL.

At the start of August 2020, we submitted a report requesting an Environmental Impact Assessment (EIA) Screening Opinion from Mid Suffolk District Council and Babergh District Council. The Council advised the project would require an EIA, and hence we submitted our EIA Scoping Report seeking to agree the scope of the necessary work to the Council on Friday 18 September 2020. The proposed site area has reduced by approximately 38% through the removal of proposed solar panels from the south eastern parcel of land.

The generating station would have an export capacity of up to 49.9MW for distribution to the national grid. This is equivalent to the annual electrical needs of approximately 13,000 family homes. The anticipated CO2 displacement is around 21,500 tonnes per annum, which represents an emission saving equivalent of a reduction in 7,000 cars on the road every year.

The battery storage system will supply electricity to the local electricity network at times of peak energy demand and help make the renewable energy output of the solar farm a secure and reliable part of the UK energy supply.



Evolving Concept Design of Bramford Solar Farm

What are the Benefits of the Solar Farm and Battery Storage Facility?

The main benefits of the development proposed are summarised below.

- It will assist Babergh and Mid Suffolk District Councils to urgently reduce greenhouse gas emissions in line with local, national and international targets and its declared Climate Emergency to transition to a low carbon future.
- Contribute towards the security of energy supply in Babergh and Mid Suffolk District Councils through the provision of significant amounts of local, competitive renewable energy.
- The solar panels will utilise an innovative tracking system, allowing the solar panels to track the sun from east to west, this increases electrical productivity by c. 20-25% when compared to traditional fixed solar arrays.
- The proposals provide an important opportunity to restore biodiversity connections and enhance footpaths that can be enjoyed by the local community.
- No protected landscape, heritage or ecological designations will be adversely affected by the solar farm.
- The solar farm allows intensively farmed agricultural soils to rest for the temporary period of operation (c. 40 years) and the land use can easily be reversed to agriculture at the end of the project life.
- In addition to renewable energy production, the solar farm will significantly improve biodiversity by planting of wildflower grassland around the arrays; native species-rich hedgerows along damaged field boundaries; new trees and scrub to improve species diversity and insect, bat and bird boxes to help local species including bees to thrive (visit www.solar-trade.org.uk/solar-farms).
- We anticipate that construction will be complete in just 30 weeks. This will typically require 8 HGV deliveries to the site each day travelling via the A14, the B113 Bramford Road and Somersham Road.
- Enso Energy is committed to using local suppliers during construction and operation where possible.

Getting to Net Zero

The UK Government has signed up to a Renewable Energy Directive to provide 15 per cent of energy from renewables by 2020 (based on a 2008 baseline). In addition to this, the Government has made a legal commitment to cutting carbon emissions to net zero by 2050 (Climate Change Act 2008 (2050 Target Amendment) Order 2019). To achieve net zero by 2050 will require a rapid and expanded deployment of low carbon power, including solar.

In July 2019 Babergh and Mid Suffolk District Councils joined a growing number of local authorities who have declared a climate emergency. Babergh and Mid Suffolk District Councils has pledged to enable Babergh and Mid Suffolk to become carbon neutral by 2030. The Bramford Solar Farm will help support Suffolk's aspiration of becoming the greenest county.

Our Vision

At Enso Energy we are making the idea of a country run on renewable energy a reality. We are one of the UK's most experienced energy developers.

Our ambition is to use the latest solar technology to make a positive impact on our country and the communities we work with. We are firm advocates for renewable, low carbon, efficient, secure and sustainable energy that can be generated, stored and utilised locally. We are passionate about creating positive change for the UK's energy requirements and carbon commitments.

Our innovative and entrepreneurial approach to subsidy-free renewable energy is assisting the country's move towards a more secure renewable energy supply and accelerating our combined progress to net zero.



Our approach to consultation during the Coronavirus crisis

Enso Energy agree with the guidance issued by the UK Government's Chief Planner, which emphasised that planning applications that positively impact the country and local communities must continue to come forward.

Enso Energy believes that it is vital that local communities are able to see and shape planning applications that may have an impact on them.

We therefore invite you to provide feedback on our draft proposals in the following ways:

1 Fill in the feedback form that accompanies this public consultation brochure.

This consultation brochure contains the same information that would have been displayed at a typical public consultation event.

Please read through the brochure and provide feedback to us by way of the free post feedback form that came with the brochure.

2 Attend our public consultation webinar and Q&A session on Thursday 8th October from 5pm – 7pm

You are invited to attend our online public consultation webinar and Q&A session event. The webinar will be a ten-minute presentation by the project team where they will outline the draft proposals. During the Q&A session which will follow the webinar you'll have the opportunity to ask any questions you may have about the draft proposals with members of the project team.

The webinar will be recorded and hosted on our public consultation website so that you can watch it again or see it if you are unable to watch it live.

You can of course get in contact with the project team at any time, through our public consultation website: www.ensoenergy.co.uk/proposed-projects/bramford/

You can register to attend our online public consultation event by visiting our website www.ensoenergy.co.uk/proposed-projects/bramford/ and completing the webinar registration form. You will then receive an email with details on how to join the public consultation webinar.

3 Visit the dedicated public consultation website: www.ensoenergy.co.uk/proposed-projects/bramford/

We have set up a dedicated public consultation website, where you can find information about our draft proposals and provide feedback.



About Us

Enso Energy is a successful energy developer, focussed on delivering the right results for our clients, the environment and the local community.

We all care about our climate, and we all care about where we live. We believe that considerate solar energy development can make both better. That's why our holistic approach to solar energy development includes working with all our stakeholders throughout the development process.

Our team has a proven track record in developing large scale energy projects, totalling in excess of 1,500MW of distributed generation. As an independent developer we have worked across the full spectrum of energy generation and storage technologies, deploying solutions that suit each site.

Have your say

This brochure forms part of our pre-planning application process at which we are asking for your opinion on a proposed solar farm and battery storage facility on land north, south and east of Flowton, IP8 4PN.

Please take your time to consider the information within this brochure, and don't hesitate to contact a member of our team should you have any questions or matters you need to be clarified.

We would be grateful if you could answer the feedback form and let us have your contact details for the purpose of informing the project design and providing feedback to the Council.

For further information, please do not hesitate to email feedback@alpacacommunications.com.



Register for Updates

Please visit www.ensoenergy.co.uk/proposed-projects/bramford/ where information about our proposals will be updated, and where you can register to be receive updates.



020 7499 2842



feedback@alpacacommunications.com



www.ensoenergy.co.uk

Should you require this document in large print, audio or braille then please contact us at the details provided.

Enso Energy working in partnership with Macquarie's Green Investment Group for the delivery of large scale solar projects.



Green
Investment
Group

Feedback form

To return your completed feedback form please tear it from the brochure, insert into the enclosed pre-paid envelope and pop it in the post by **Friday 16th October**. Alternatively, you can return your form via email to feedback@alpacacommunications.com.

Title: Name:
 Address:
 Postcode:
 Email: Telephone:

1. Has this local resident brochure been helpful in understanding our proposal?

Yes No Not sure

2. What is the most important issue to you about our proposal, where 1 is of highest importance and 8 is of least importance.

Construction traffic Landscape impact Loss of agricultural land
 Increasing biodiversity Visual impact Impact on footpaths
 Climate change Residential amenity impact

3. With regards to the proposals you have read about within this brochure, are you:

In favour In objection Of no opinion

4. We would welcome your feedback on all aspects of the emerging design shown in the brochure, including whether:

- The proposed Somerton to Flowton wildlife and recreational corridor is something you would like included within the design?
- The Channel wildflower green corridor proposal is something you would like included within the design?
- The proposed interpretation boards and seating areas are in the most suitable locations to inform footpath users about solar energy and biodiversity benefits?
- The proposed new boundary planting to screen and restore hedgerows is in the correct locations and whether additional planting areas are needed and where?

5. Your views are important to us, if you'd like us to keep in touch how would you like us to contact you?

- Website Email Newsletter SMS

6. Any other comments?

Thank you for taking the time to fill out our feedback form, your personal details including your name, address and contact details may be included as part of a consultation report submitted with this application to Babergh and Mid Suffolk District Councils. If you prefer your details do not be shared, please tick here .